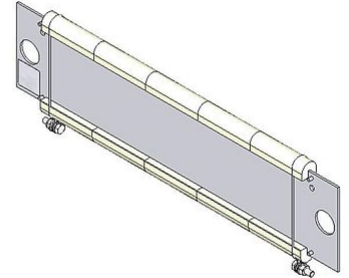



DATA SHEET

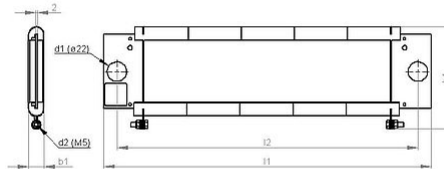
RAF 100_8L | 0.6 - 1.05 kW
Wire Resistor
l.i. 1)



| Article-No. | ds2003 0017 | | | |
|---|---|------------|------------|------------|
| Type | RAF 100/5L | RAF 100/6L | RAF 100/7L | RAF 100/8L |
| Nominal continuous power (kW) $T_a \sim 40\text{ °C}$ | 0.6 | 0.8 | 0.9 | 1.1 |
| Resistance Values at 20°C (Ohm) | 1.2 - 8 | 1.4 - 10 | 1.6 - 12 | 1.8 - 14 |
| Tolerance of resistance at 20°C | ±10% | | | |
| Degree of protection (EN 60529) (in the accordingly screwed on state) | IP 00 | | | |
| Max. permissible operating voltage | EN 2000 V DC | | | |
| Cooling | natural convection | | | |
| Electrical terminal | M5 | | | |
| Operation temperature range | -25 ... +40 °C | | | |
| Mounting positions |  | | | |

Subject to technical modifications

DATA SHEET



| Article-No. | | ds2003 0017 | | | |
|---------------------|----|-----------------------------|------------|------------|------------|
| Type | | RAF 100/5L | RAF 100/6L | RAF 100/7L | RAF 100/8L |
| Length [mm] | l1 | 370 | 430 | 490 | 550 |
| | l2 | 340 | 400 | 460 | 520 |
| Width [mm] | b1 | <20 | <20 | <20 | <20 |
| Height [mm] | h1 | ~116 | ~116 | ~116 | ~116 |
| Weight approx. [kg] | | 0.8 | 0.95 | 1.1 | 1.25 |
| 1) l.i. | | low inductance crosswinding | | | |
| Last update | | 2015-10-29 | | | |

Mounting instruction:

The resistor should be protected by appropriate safety measures against overloading.
Do not mount the resistor with any obstruction in the air inlet or air outlet area.

The resistor has to be grounded.