

Aluminum resistors – the compact one

HEINE Resistor worlds

Our aluminum resistors are used for the following applications:

brake - enable the motion to be controlled reliably

charge - protect capacitors in batteries

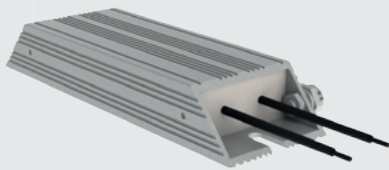
start - control the starting current of powerful motors

filter - reduce undesired voltage, current and load peaks

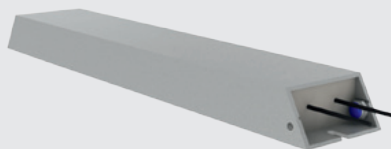
Characteristics

- approved and trusted HEINE resistor technology
- light weight
- compact dimensions
- high energy absorption capacity
- aluminum housing (GW series)
or
- aluminum profile housing with integrated cooling fins (GWK series)

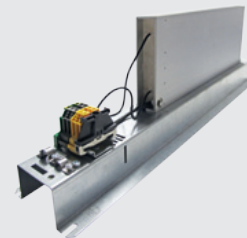
References



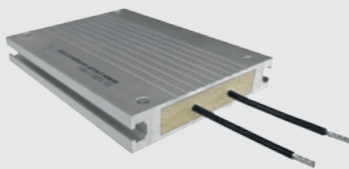
GWS 40x20



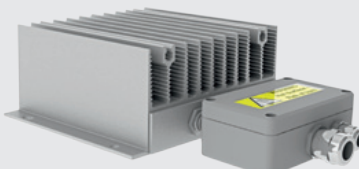
GWS 60x30



GWHS 120x30



GWS 80x15



GWK 150



GWS 70x70

Technical data

Continuous power	40 – 10.000 W
Resistance values single	2.2 – 5.400 Ω
Protection class	IP20 – IP66

Applications and Customers:

- brake / chopper resistor for frequency converters
- brake resistors for cranes
- brake resistors for elevators
- brake resistors for stage technology
- discharge / charge resistor for renewable energy
- discharge / resistors for trains

Industries



Automation & drives



Mechanical engineering



Transport & logistics



Power generation

Worlds
brake
charge
start
filter

HEINE Resistors GmbH

Otto-Mohr-Straße 5
01237 Dresden · Germany

Phone: +49 351 3192-0

Fax: +49 351 3192-119

Mail: info@heine-resistors.com

www.heine-resistors.com



Microelettrica Scientifica

Knorr-Bremse Group

