

Plate resistor – the powerful one

HEINE Resistor worlds

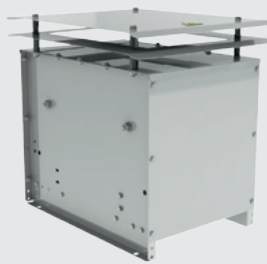
Our plate resistors are used for the following applications:

- brake** - enable the motion to be controlled reliably
- load** - load testing of power generation units
- start** - control the starting current of powerful motors
- test** - to test power supply systems or electric drives regularly filter
- earth** - prevent damage to grid-connected systems

Characteristics

- approved and trusted HEINE resistor technology
- very high energy absorption capacity
- standardized design
- customized types possible

References



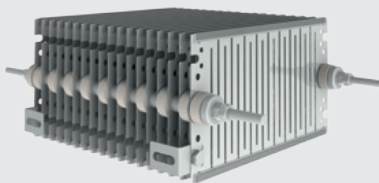
STG 1xx (IP23)



STG 2xx (IP23)



STG-3xx



STG-S (IP00)



STG-X (IP20)



STG-X (IP23)

Technical data

Continuous power	up to 160 kW
Resistance values single	0.1 – 100 Ω
Protection class	IP00, IP20, IP23

Applications and Customers:

- brake / chopper resistor for frequency converters
- brake resistors for cranes
- brake resistors for stage technology
- brake resistor for renewable energy

Industries



Automation & drives



Transport & logistics



Plant engineering



Power generation

Worlds
brake
load
test
earth

HEINE Resistors GmbH

Otto-Mohr-Straße 5
01237 Dresden · Germany

Phone: +49 351 3192-0

Fax: +49 351 3192-119

Mail: info@heine-resistors.com

www.heine-resistors.com



Microelettrica Scientifica

Knorr-Bremse Group

