

Wire wound resistors – the all-rounders

HEINE Resistor worlds

Our wire wound resistors are used for the following applications:

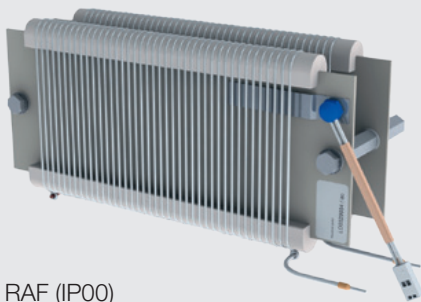
- brake** - to enable the motion to be controlled reliably
- load** - to load testing of power generation units
- charge** - to protect capacitors in batteries
- start** - to control the starting current of powerful motors
- test** - to test power supply systems or electric drives regularly
- filter** - reduce undesired voltage, current and load peaks
- earth** - prevent damage to grid-connected systems

Characteristics

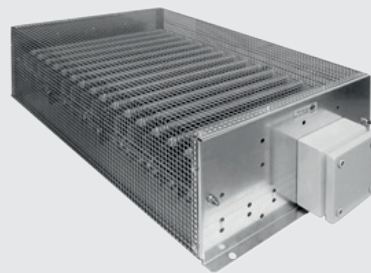
- approved and trusted HEINE resistor technology
- high energy absorption capacity
- modular design
- high durability
- standardized design

References

Frame resistors

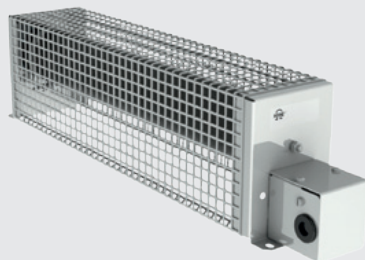


RAF (IP00)

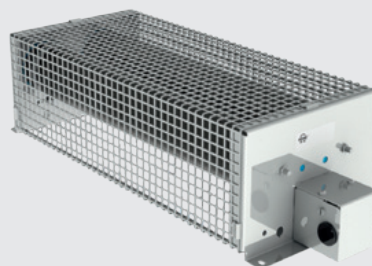


RF / RFB / RFC / RFXT (IP20)

Tube resistors



EFo / EFm (IP00 / IP20)



ZFo / ZFm / MF (IP00 / IP20)

Technical data

Continuous power	0.2 – 18 kW
Resistance values single	0.2 – 8.000 Ω
Protection class	IP00, IP20, IP23

Applications and Customers:

- brake / chopper resistor for frequency converters
- brake resistors for elevators
- charge / discharge resistor for switchboard and renewable energy

Worlds
brake
load
charge
test
start
filter
earth

Industries



Automation & drives



Mechanical engineering



Transport & logistics



Plant engineering

HEINE Resistors GmbH

Otto-Mohr-Straße 5
01237 Dresden · Germany

Phone: +49 351 3192-0

Fax: +49 351 3192-119

Mail: info@heine-resistors.com

www.heine-resistors.com



Microelettrica Scientifica

Knorr-Bremse Group

